

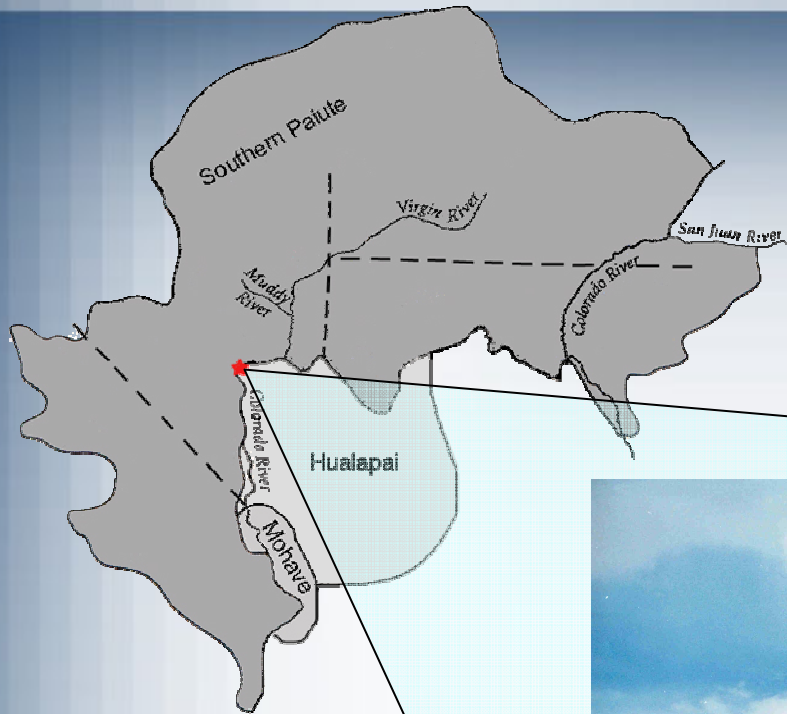
Sugarloaf Mountain: A Multi-cultural Puha Complex



Rebecca S. Toupal
Bureau of Applied Research in Anthropology
University of Arizona

Great Basin Anthropological Conference
October 19-22, 2006
Las Vegas, Nevada

Location



Introduction

Sugarloaf was...

✿ A place for practicing spiritual, educational, scientific, political, social, and economic activities.

✿ A source of *puha*, and ceremonial destination place for Southern Paiute, Hualapai, Mojave, Yavapai, Hopi, Navajo, and Zuñi people.

✿ A place to prepare for:

- ✿ Hunting
- ✿ Conducting ceremonies
- ✿ Obtaining power

✿ Uses included:

- ✿ Ceremonies
- ✿ Vision quest
- ✿ Astronomical observances
- ✿ Teaching
- ✿ Political and social gatherings
- ✿ Healing
- ✿ Obtaining power, knowledge
- ✿ Community learning center

Connections and Features

☸ Connections & continuity:

- ☸ Cultural
- ☸ Spiritual
- ☸ Ecological
- ☸ Historic

☸ Connected to:

- ☸ Sacred mountains
- ☸ Caves
- ☸ Rivers
- ☸ Springs
- ☸ Stories
- ☸ Songs

☸ Artifacts & related features:

- ☸ Ceremonial clearings
- ☸ Petroglyphs
- ☸ Turquoise mine
- ☸ *Ompi* (red ochre)
- ☸ Crystals
- ☸ Rock shelters
- ☸ Manos for grinding food &/or medicine plants
- ☸ Doctor rocks
- ☸ Lithic scatters
- ☸ Hot springs
- ☸ Mountain sheep
- ☸ Medicine plants

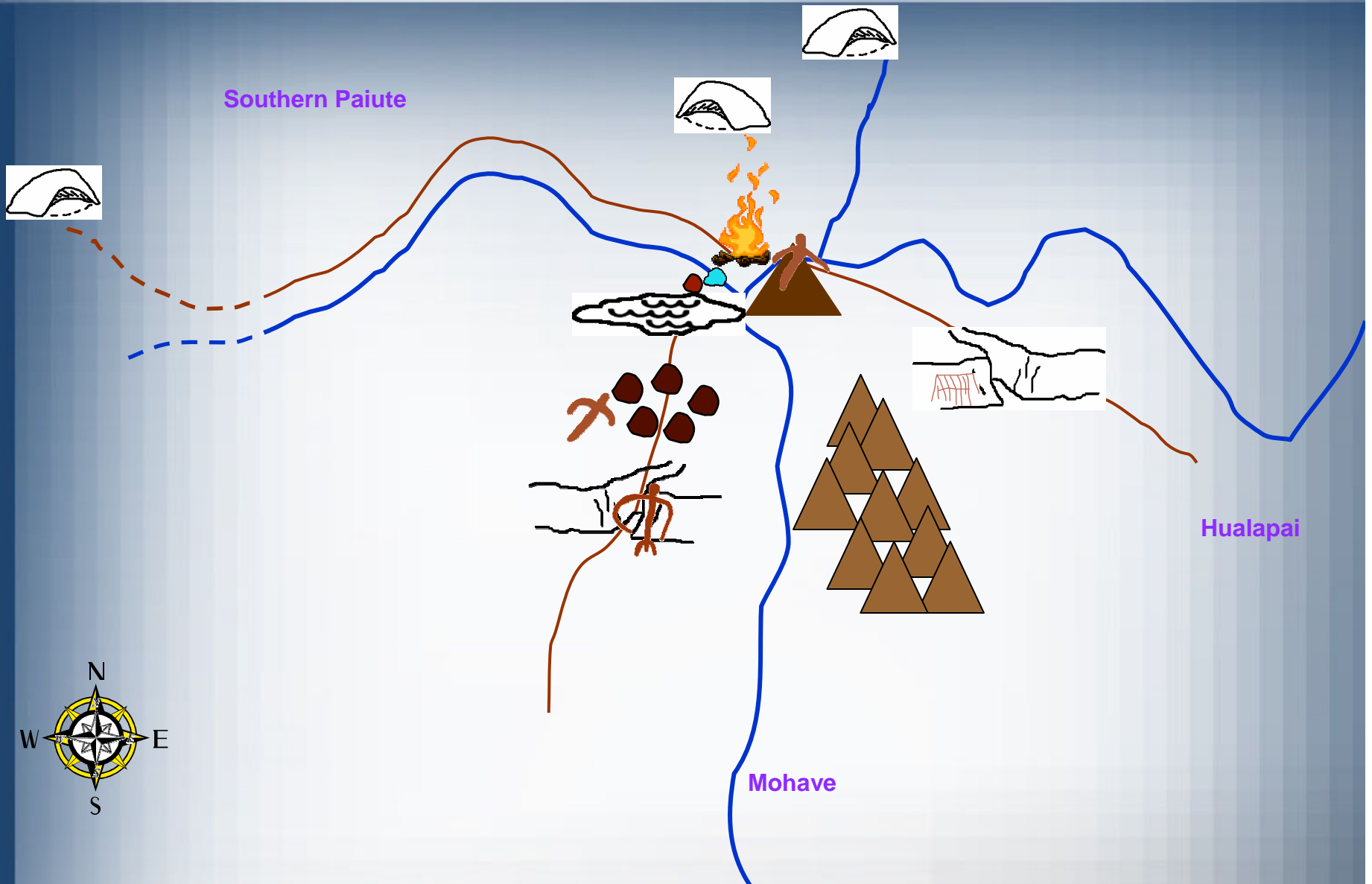
The Sugarloaf Landscape

❁ Three *puha* paths:

- ❁ one from the west (least known)
- ❁ another from the east
- ❁ a third from the south

❁ Most of the features known along these routes fall within a 5-7 mile radius from Sugarloaf. The connected caves are further away.

Puha Paths to Sugarloaf Mountain



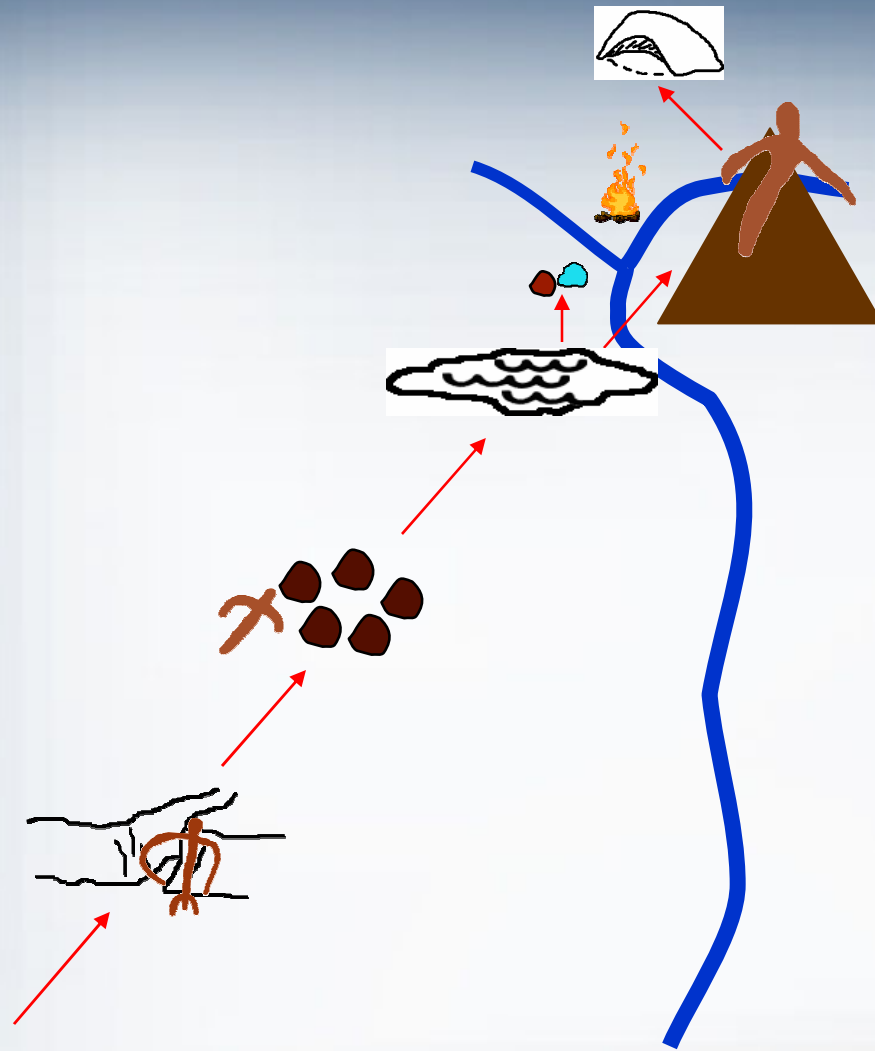
East Path: Petroglyph Canyon



Petroglyph Canyon Petroglyphs



South Path : Keyhole Canyon



Keyhole Canyon: Entrance & Preparation



Boulder Field: Preparation



Hot Springs: Purification





River Crossing



Sugarloaf Mountain



Ceremonial Clearing



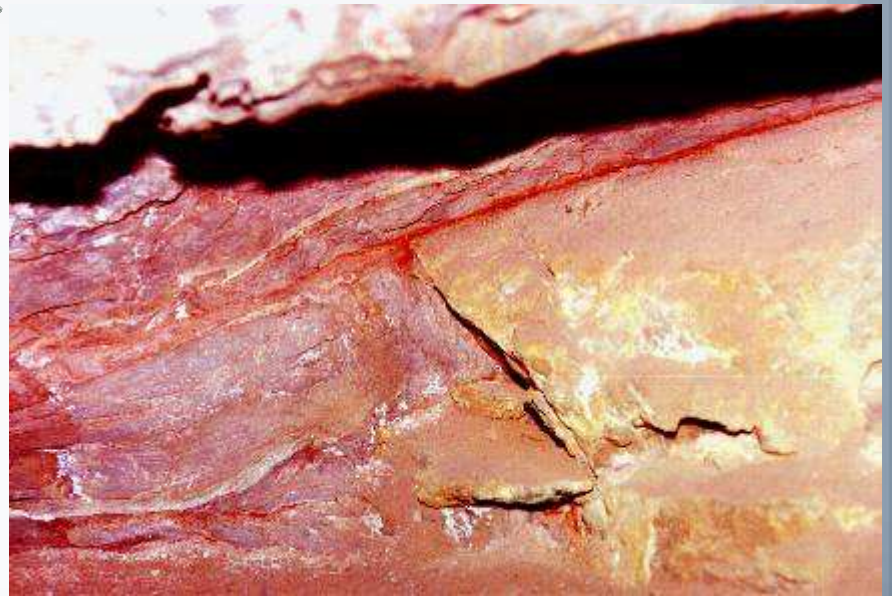
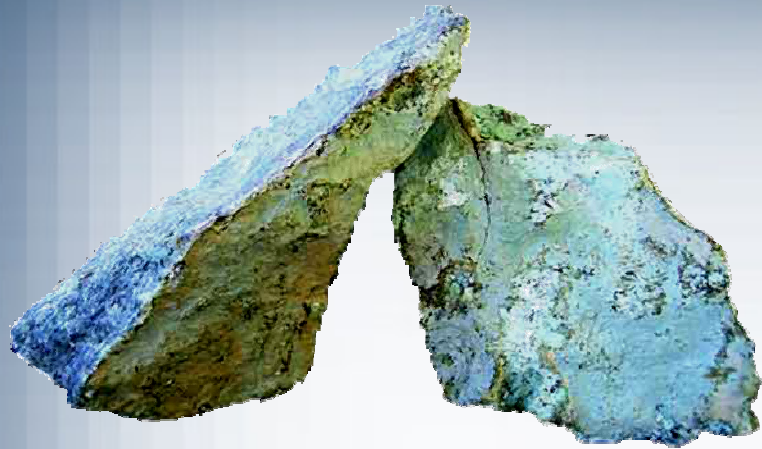
Recurring Petroglyphs



Medicine & Ceremony Helpers



Turquoise and *Ompi*



Healing Rocks & Crystals



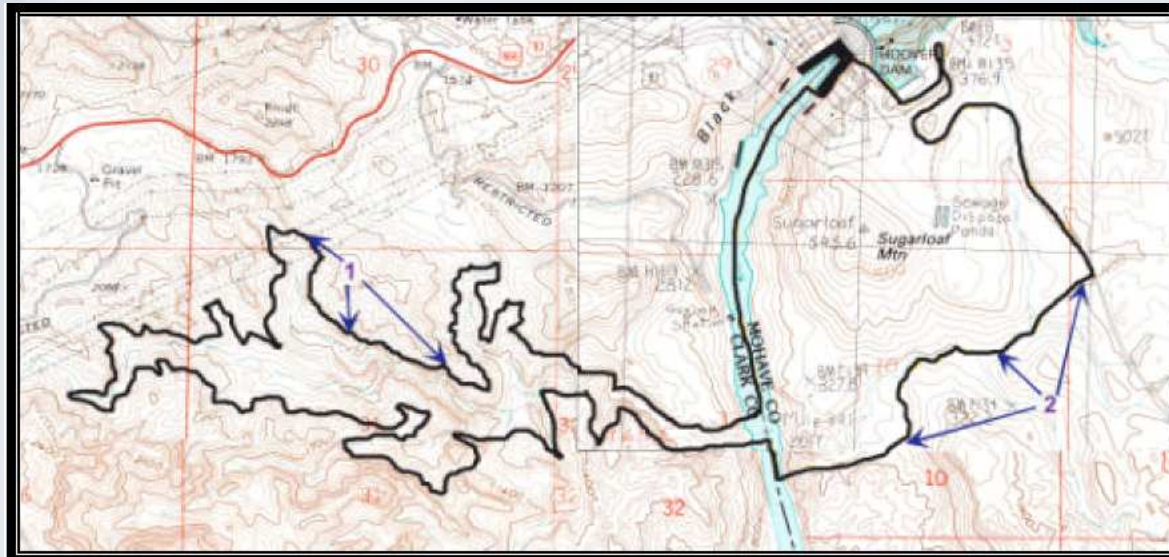
Guardians



Gypsum Cave for Songs



Gold Strike Canyon-Sugarloaf Mountain TCP, Sept. 4, 2004



Puha Landscape and the TCP

